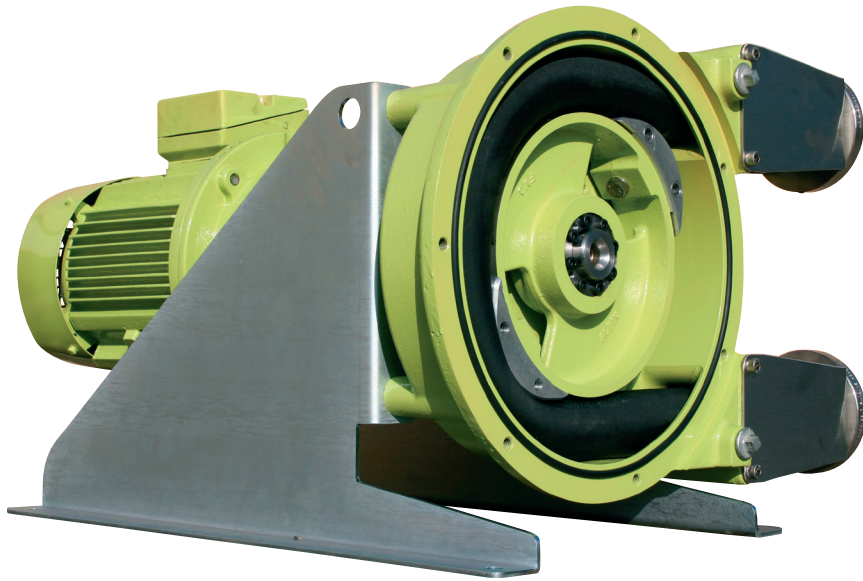


ALH Series

INDUSTRIAL HOSE PUMPS

Designed to meet the demanding requirements of chemical injection, dispensing and transfer applications.



Two shoes mounted at 180° on a rotating wheel successively compress a reinforced rubber hose that contains a fluid to be pumped. The motion of the shoes compress the rubber against the pump housing creating continuous suction at the inlet of the pump and pushing the fluid to the outlet of the pump.

The sealed pump casing contains a lubricant that reduces friction of the shoes moving over the rubber hose. The pumped fluid is in contact only with the interior of the rubber hose, thus permitting the pumping of a wide variety of reactive fluids.

PUMP HOSE

ALH Series pump hose consists of high quality compounded rubbers, reinforced with 2 to 6 individual layers of braided polyamide and with an outer layer made to strict tolerances to ensure perfect compression. ALH series hoses provide approximately 30% longer life than similar hoses on the market. They also fit the majority of other hose pumps.

Five inner layer materials are available to suit a wide range of pumped fluids: natural rubber, Buna, Buna food grade, EPDM or HYPALON.



ALH SERIES FEATURES

- No mechanical seal or stuffing box
- Suitable for aggressive or viscous fluids
- Metering of very corrosive chemicals
- Fully self-priming up to 32 ft
- Damage-free continuous dry running
- Outlet pressures up to 217 PSI
- Adjustable flow output with VFD controller
- Inverter Duty, Ex Proof and Chem Duty motor options
- Very easy maintenance
- Heavy-duty bearings, greased for life
- Two-year warranty
- Bidirectional operation
- Close coupled, compact footprint
- Low sound level: < 70 dB at 3 ft

HOSE PUMPS

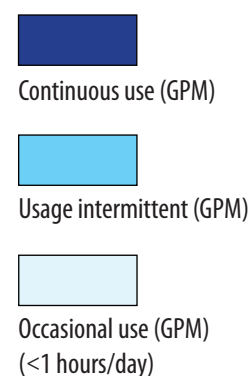


FLOMOTION ALH SERIES HOSE PUMPS

FLOW TABLE (GPM)

TYPE	10 RPM	20 RPM	40 RPM	60 RPM	80 RPM	100 RPM	120 RPM	140 RPM
ALH 05 (3 lobes)	0.015	0.03	0.06	0.09				
ALH10 (3 lobes)	0.04	0.09	0.18	0.26				
ALH 10	0.07	0.13	0.26	0.40	0.53	0.66	0.79	
ALH 15	0.22	0.44	0.88	1.32	1.76	2.20	2.64	
ALH 20	0.29	0.75	1.50	2.20	2.95	3.74	4.27	
ALH 25	0.88	1.76	3.52	5.28	7.04	8.81	10.57	12.33
ALH 32	1.65	3.30	6.60	9.91	13.21	16.51	19.81	23.12
ALH 40	2.49	5.15	10.30	15.45	20.61	30.16	30.91	36.06
ALHX 40	3.52	7.04	14.1	21.13	28.18	35.22		
ALH 50	7.71	15.4	30.8	46.23	61.64	77.05		
ALH 65	10.13	20.3	40.5	60.76	81.01	101.27		

TYPE	10 RPM	20 RPM	30 RPM	35 RPM	40 RPM	45 RPM	50 RPM
ALHX 80	24.2	48	73	84.76	96.86	108.97	121.08
ALH 80	30.8	62	92	107.87	123.28	138.69	154.10
ALH 100	52.8	106	159	184.92	211.34	237.75	
ALH 125	96.9	194	291	339.02	387.45		



TYPICAL APPLICATIONS

WATER TREATMENT lime slurry, ferric chloride, activated carbon, sodium hypochlorite, magnesium hydroxide, hydrogen peroxide, coagulant, flocculate dispersion, alum, sludge and foams. **MINERAL PROCESSING** sludge with viscosity up to 60 000 Cps, clay up to 800g/l, particle size: 30mm, lead sulfate, pyrite, SABX, cyanide, various acids. **CERAMIC** barbotine, mould filling, filter press feeding. **BUILDING** fibrous mortar, plaster, light concrete, cement flooring.

CHEMICAL INDUSTRY various acids, PVDF latex, alcohol, soap, non-aromatic solvents. **FOOD INDUSTRY** tomato sauce, mash potatoes, gelatin, beer yeast, fish paste, olive oil, wine. **PAINT** water based paint, acrylics, pigments, ink, wall coating. **PAPER MILLS** latex, kaolin, paper waste sludge, various chemical dosing. **AGRICULTURE** manure, fertilizer. **SUGAR MILLS** molasses, liquid sugar and various chemicals.

For more information request the complete ALH Technical Brochure. It is also available on our web site.

FLOMOTION SYSTEMS Inc.
 165 Creekside Drive, Suite 112
 Buffalo NY 14228-2103
 Tel: 716-691-3941
 Fax: 716-691-1253
 Email: info@flomotionsystems.com
 www.flomotionsystems.com



36 Hudson Rd
 Sudbury MA 01776



800-225-4616
 www.tisales.com

