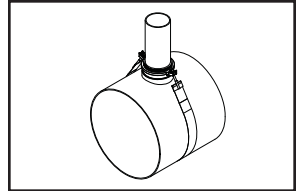
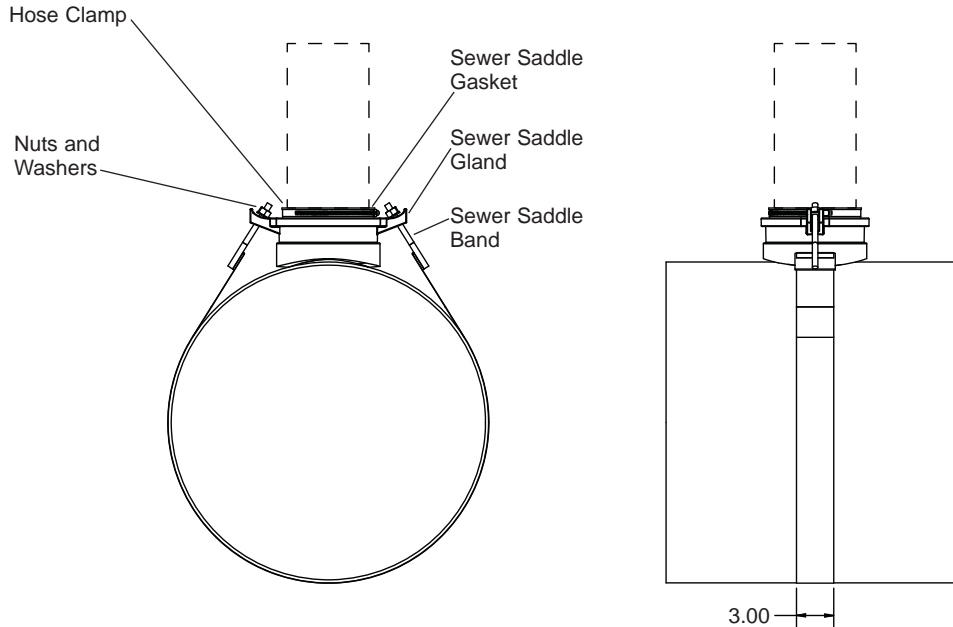


SUBMITTAL INFORMATION

Sewer Saddles - (FSS-xxxx-x style)



FSS SEWER SADDLE FOR SEWER PIPE



RANGE	NOMINAL BRANCH SIZE	BRANCH PIPE RANGE	APPROX. WT. LBS.	CATALOG NUMBER	✓ SUBMITTED ITEM(S)
6.27" – 14.40"	4"	4.20" – 4.80"	10.3	FSS-1440-4	
14.40" – 25.80"			11.5	FSS-2580-4	
25.80" – 50.80"			13.1	FSS-5080-4	
8.00" – 14.40"	6"	6.27" – 6.66"	12.1	FSS-1440-6	
14.40" – 25.80"			13.2	FSS-2580-6	
25.80" – 50.80"			15.3	FSS-5080-6	

FEATURES

- Gland made of high strength ductile iron per ASTM A536 with black e-coat epoxy
- Wide bands and 1/2" UNC threaded bolts of 18-8 type 304 stainless steel per ASTM A240
- Gasket is Buna-N (NBR) rubber, ASTM D2000
- Hose clamp is stainless steel with zinc-plated screw
- Nuts and washers are type 304 stainless steel

The Ford Meter Box Company considers the information in this submittal form to be correct at the time of publication. Item and option availability, including specifications, are subject to change without notice. Please verify that your product information is current.



The Ford Meter Box Company, Inc.

P.O. Box 443, Wabash, Indiana U.S.A. 46992-0443

Phone: 260-563-3171 / Fax: 800-826-3487

Overseas Fax: 260-563-0167

www.fordmeterbox.com

07/09/15

Ti SALES

36 Hudson Rd
Sudbury MA 01776



800-225-4616
www.tisales.com