

# Be Confident with Sustained Accuracy Over Time

## Neptune® MACH 10® Ultrasonic Meter



The MACH 10® ultrasonic water meter features solid state metrology with no degradation of accuracy over time. Combined with a corrosion-resistant, lead free, high-copper alloy maincase, the MACH 10 is built to withstand demanding service conditions and deliver sustained accuracy over the life of the meter.

- Sizes 1½" and 2"
- Extended low-flow range for superior leak detection
- Accuracy sustained over meter life
- Can be installed in both horizontal and vertical applications
- Advanced ultrasonic technology
- Lead free, high-copper alloy maincase
- Certified to UL 327B (1½", 2") for residential fire service applications
- No maintenance

## Specifications

AWWA C715 Compliant

NSF/ANSI 61 Certified

UL 327B Certified

(Optional for 1½", 2")

### Application

- Cold water measurement of flow in potable, combination potable and fire service, and reclaim/secondary water applications.

### Maximum Operating Water Pressure

- 175 psi

### Operating Water Temperature Range

- +33°F to +122°F (+0.5°C to +50°C)

### Environmental Conditions

- Operating temperature: +14°F to +149°F (-10°C to +65°C)
- Storage temperature: -40°F to +158°F (-40°C to +70°C)

### Expected Battery Life

- 20 years

## Options

### Sizes

- 1½"
- 2"

### Meter Options

- Potable water
- Reclaim water
- Residential fire service (combo or standalone meter service lines)

## Warranty

- Neptune provides a limited warranty for performance, materials, and workmanship. See warranty statement for details.

## System Compatibility

- Compatible with all Neptune endpoints. Also available as MACH 10®)R900i™ for an integrated radio solution and MACH 10®)TC for Sensus Touch Coupler compatibility.

## Operating Characteristics

Meter Size	Normal Operating Range @ 100% Accuracy (+/- 1.5%)	AWWA C715 Standard Type 1	Extended Low Flow @ 100% Accuracy (+/- 3.0%)
1½"	0.80 to 125 U.S. gpm	2.0 to 100 U.S. gpm	0.30 U.S. gpm
2"	1.50 to 160 U.S. gpm	2.5 to 160 U.S. gpm	0.50 U.S. gpm

## Dimensions

Meter Size	Length	Height	Flanges
1½"	10"	6¼"	Oval
	13"	6¼"	Oval
	12⅝"	6¼"	Internal Thread
	12⅞"	6¼"	External Thread
2"	10"	6½"	Oval
	15¼"	6½"	Oval
	17"	6½"	Oval
	15¼"	6½"	Internal Thread
	15¼"	6½"	External Thread

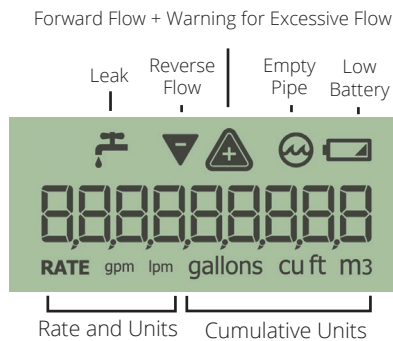
## Available Units of Measure

Consumption	Rate
Gallons	GPM
Cubic Feet	GPM
Cubic Metres	LPM
Cubic Meters (International)	LPM
Imperial Gallons	GPM
Acre-Feet*	GPM
Litres*	LPM
Kilolitres*	LPM

\*Unit cannot be displayed on LCD

## LCD Display

9-digit display for extra resolution on manual reads.

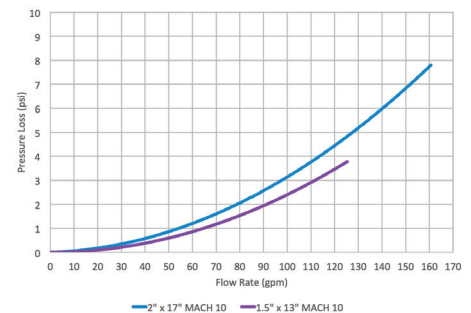


## Registration

High Resolution (8-digit reading)		1½"	2"
1	U.S. Gallons	√	√
1	Imperial Gallons	√	√
0.1	Cubic Feet	√	√
0.01	Cubic Metres	√	√

## Pressure Loss

Typical meter performance. Individual results may vary.



# Ti SALES

36 Hudson Rd  
Sudbury, MA 01776

800.225.4616  
www.tisales.com



Metering Systems Support  
978.261.7683