



A PRODUCT SHEET OF NEPTUNE TECHNOLOGY GROUP

Strainers

SIZES: 1½", 2", 3", 4", 6", 8", 10", and 12"

Neptune® strainers are designed and built for long-term, trouble-free performance in water pipeline service. They are specially designed for installation with HP Turbine or TRU/FLO® compound meters and are compatible with all other makes as well.

Neptune recommends that a strainer be installed with each HP Turbine or TRU/FLO Compound meter to prevent meter damage and to ensure accurate registration regardless of the configuration of the meter installation.

Performance

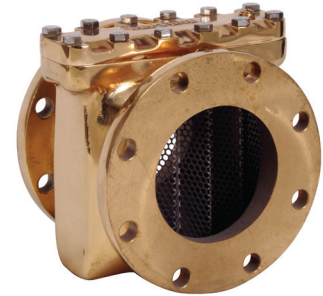
When installed at the inlet of a turbine or compound meter, the strainer performs two very important functions:

- It provides protection against damage to the turbine meter measuring element from debris or foreign material in the pipeline.
- The stainless steel, plate-type strainer element is designed to improve the velocity profile of the flow stream entering the meter. This velocity profile improvement optimizes turbine meter performance. Good metering practice normally requires 8 to 10 diameters of straight pipe at the meter inlet to minimize velocity profile distortion caused by upstream valves or other fittings. The Neptune strainer reduces this long straight-run requirement and simplifies meter installation.

Construction

Neptune strainers are built of the highest-quality, time-proven materials available for water pipeline service. Strainer bodies and covers in 1½" through 10" sizes are made of lead free, high-copper alloy. A 12" body is available in an epoxy-coated steel. Strainer elements and cover bolts in all sizes are stainless steel.

Neptune strainers are rated at 150 psi working pressure. Each strainer is hydrostatically tested at 300 psi before shipment to ensure hydraulic integrity.



KEY FEATURES

Lead free, high-copper alloy;
chemical and corrosion resistant

NSF/ANSI 61 certified and
NSF/ANSI 372 compliant

Low head loss

Stainless steel strainer plate and
cover bolts

Height to center line matches
Neptune HP Turbines for easy
installation

In-line serviceability

Dimensions

Meter Size	A in/mm	B in/mm	C in/mm	D in/mm	E in/mm	F in/mm	No. of Holes	Hole Dia. in/mm	Weight lbs/kg
1 1/2"	7 178	6 152	5 1/4 133	2 1/8 54	4 1/2 114	3/4 19	2	3/4 19	15 6.8
2"	7 178	6 152	5 1/4 133	2 1/8 54	4 1/2 114	3/4 19	2	3/4 19	15 6.8
3"	6 152	8 1/2 216	8 3/4 222	3 3/4 95	6 152	5/8 16	4	3/4 19	30 13.6
4"	7 1/2 191	9 3/4 248	10 1/2 267	4 1/2 114	7 1/2 191	1 1/16 17	8	3/4 19	42 19.0
6"	9 229	11 3/4 298	11 1/2 292	5 1/2 140	9 1/2 241	7/8 22	8	7/8 22	70 31.8
8"	10 254	14 356	13 1/2 343	6 3/4 171	11 3/4 298	1 1/8 29	8	7/8 22	120 54.5
10"	15 381	18 1/4 464	18 1/4 464	8 203	14 1/4 362	1 3/16 30	12	1 25	160 72.6
12"	16 7/8 429	19 483	22 1/2 572	9 1/2 241	17 432	1 1/16 17	12	1 25	400 181

Options

Lead free, high-copper alloy
Epoxy-coated steel

Maximum Operating Pressure

150 psi

Part Numbers

Lead Free, High-Copper Alloy

- 1 1/2" 53145-000
- 2" 53120-000
- 3" 53107-000
- 4" 53107-100
- 6" 52000-201
- 8" 52000-304
- 10" 52000-402

Lead Free, Epoxy-Coated Steel

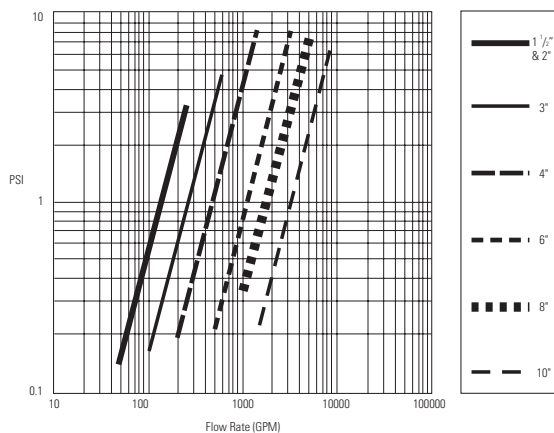
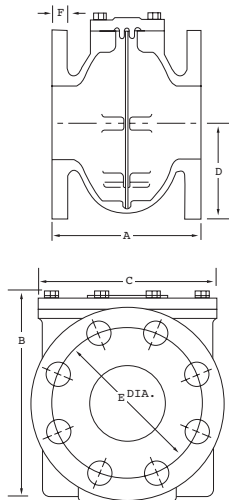
- 12" 12790-000

Warranty

Neptune provides a limited warranty for performance, materials, and workmanship. See warranty statement for details.

Pressure Loss

This chart shows typical meter performance. Individual results may vary.



36 Hudson Rd
Sudbury, MA 01776

800.225.4616

www.tisales.com



Metering Systems Support
978.261.7683