

1000 RC Series & 5000 RC Series Couplings

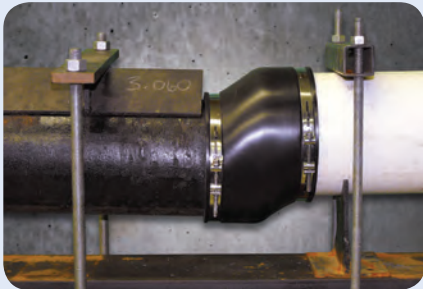
The Ultimate Repair Couplings - Engineered for resistance to heavy earth loads and shear forces, while providing improved pipe alignment.



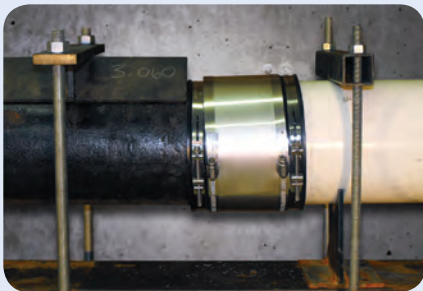
1000 RC Series
301 series stainless steel
worm gear clamps



5000 RC Series
316 series stainless steel
nut & bolt clamps



Shear Resistance Test using an unshielded sewer coupling per ASTM C 1173 (applied load 50 pounds per nominal inch of pipe diameter)



Shear Resistance Test using a Fernco Repair Coupling per ASTM C 1173 (applied load 50 pounds per nominal inch of pipe diameter)

Meets requirements of:

- **ASTM C 1173** - Standard Specification for Flexible Transition Couplings for Underground Piping Systems
- **ASTM D 5926** - Standard Specification for Poly Vinyl Chloride (PVC) Gaskets for Drain, Waste, and Vent (DWV), Sewer, Sanitary, and Storm Plumbing Systems
- **CSA B602** - mechanical couplings for drain, waste, vent pipe and sewer pipe

TECHNICAL SPECS

Gasket

- Manufactured to meet the material requirements of:
 - CSA B602 - mechanical couplings for drain, waste, vent pipe and sewer pipe
 - ASTM D 5926 - Standard Specification for Poly Vinyl Chloride (PVC) Gaskets for Drain, Waste, and Vent (DWV), Sewer, Sanitary, and Storm Plumbing Systems
 - ASTM C 1173 - Standard Specification for Flexible Transition Couplings for Underground Piping Systems
- Hardness, Shore "A", Inst. ± 5 65
- Tensile Strength, Min. psi 1000
- Elongation at Rupture, Min. %..... 250
- Tear Strength, Min..... 150 lb/in.
- Brittleness Temperature..... -40°F

Worm Gear Clamps - 1000 Series

- Clamp Housing - 301 Stainless Steel
- Clamp Band - 301 Stainless Steel
- Clamp Screw - 305 Stainless Steel
- Installation torque 60 in-lbs

Nut & Bolt Clamps - 5000 Series

- Clamp Band - 316 Stainless Steel
- 6" and larger couplings incorporate two nut and bolt take-up points per band
- Installation torque 60 in-lbs

Shear Ring

- .012" Thick, 300 Series Stainless Steel
- Width manufactured according to coupling width (1.50", 2.13", or 4")
- Length manufactured according to coupling diameter
- Clamps spot welded in place

Coupling

- Manufactured to conform to the performance requirements of:
 - ASTM C 1173 - standard specification for flexible transition couplings for underground piping systems



36 Hudson Rd
Sudbury MA 01776



800-225-4616
www.tisales.com



United States
PH: 810-503-9000
FX: 810-503-1015

www.fernco.com

Canada
PH: 519-332-6711
FX: 519-332-8610

1001 & 5001 RC Series - Clay to Clay

1000 RC SERIES	5000 RC SERIES	A	in	mm	B	in	mm	C	in	mm
1001-44RC	5001-44RC	5.29		134	5.29		134	4.10		104
1001-44WCRC	5001-44WCRC	5.51		140	5.51		140	3.97		101
1001-64RC*	5001-64RC	7.50		191	5.50		140	6.02		153
1001-66RC	5001-66RC	7.50		191	7.50		191	6.02		153
1001-66WCRC	5001-66WCRC	8.00		203	8.00		203	6.00		152
1001-88RC	5001-88RC	9.65		245	9.65		245	5.99		152
1001-88WCRC	5001-88WCRC	10.00		254	10.00		254	6.00		152
1001-1010RC	5001-1010RC	12.40		315	12.40		315	5.90		150
1001-1010WCRC	5001-1010WCRC	12.40		315	12.40		315	5.90		150
1001-1212RC	5001-1212RC	14.51		369	14.51		369	6.38		162
1001-1212WCRC	N/A	15.25		387	15.25		387	6.42		163
1001-1515RC	5001-1515RC	18.14		461	18.14		461	9.89		251
1001-1818RC	5001-1818RC	21.90		556	21.90		556	9.63		245
1001-2424RC	N/A	28.97		736	28.97		736	9.89		251

1002 & 5002 RC Series - Clay to Cast Iron or Plastic

1000 RC SERIES	5000 RC SERIES	A	in	mm	B	in	mm	C	in	mm
1002-43RC*	5002-44RC	5.29		134	3.38		86	4.10		104
1002-44RC	5002-44WCRC	5.36		136	4.51		115	4.07		103
1002-44WCRC	N/A	5.44		138	4.55		116	3.96		101
1002-46RC*	5002-46RC	5.13		130	6.60		168	5.74		146
1002-55RC*	5002-55RC	6.60		168	5.50		140	5.74		146
1002-64RC*	5002-64RC	7.50		191	4.50		114	6.02		153
1002-64WCRC*	5002-64WCRC	8.00		203	4.50		116	6.00		152
1002-64WCRC-SDR*	5002-66RC	8.00		203	4.38		111	6.00		152
1002-66RC	5002-66WCRC	7.50		191	6.56		167	5.89		150
1002-66WCRC	5002-86RC	8.04		204	6.38		162	5.91		150
1002-88RC	5002-88RC	9.76		248	8.57		218	5.96		151
1002-88WCRC	5002-88WCRC	10.00		254	8.66		220	6.00		152
1002-1010RC*	5002-1010RC	12.40		315	10.75		273	5.90		150
1002-1010WCRC*	5002-1010WCRC	12.40		315	10.75		273	5.90		150
1002-1210RC*	N/A	14.51		369	10.60		269	6.00		152
1002-1212RC*	5002-1212RC	14.51		369	12.60		320	6.38		162
1002-1212WCRC*	N/A	15.25		387	12.60		320	6.42		163
1002-1215RC*	N/A	14.38		365	15.25		387	6.42		163
1002-1515RC*	5002-1515RC	18.14		461	15.40		391	9.89		251
1002-1818RC*	5002-1818RC	21.90		556	19.00		483	9.63		245
1002-2121RC*	N/A	25.46		647	22.30		566	9.89		251
1002-2424RC*	N/A	28.97		736	25.00		635	9.89		251

1003 & 5003 RC Series - Clay to AC or Ductile Iron

1000 RC SERIES	5000 RC SERIES	A	in	mm	B	in	mm	C	in	mm
1003-44RC	5003-44RC	5.41		137	4.94		125	4.07		103
1003-66RC	5003-66RC	7.25		184	6.84		174	5.93		151
1003-66WCRC*	N/A	8.00		203	6.80		173	6.00		152
1003-68RC*	N/A	7.20		183	9.05		230	5.98		152
1003-8-10RC*	N/A	9.65		245	11.22		285	5.97		152
1003-88RC	5003-88RC	9.75		248	9.06		230	5.94		151
1003-1010RC*	N/A	12.40		315	11.12		282	5.90		150
1003-1212RC*	5003-1212RC	14.51		369	13.20		335	6.38		162
N/A	5003-1516RC	18.10		460	18.10		460	9.89		251
1003-1818RC*	N/A	21.90		556	19.50		495	9.63		245

1004 & 5004 RC Series - Concrete to Concrete

1000 RC SERIES	5000 RC SERIES	A	in	mm	B	in	mm	C	in	mm
1004-44RC	5004-44RC	5.51		140	5.51		140	3.97		101
1004-66RC	5004-66RC	7.58		193	7.58		193	5.94		151
1004-88RC	5004-88RC	10.38		264	10.38		264	5.90		150

1004-1010RC	5004-1010RC	12.40		315	12.40		315	5.90		150
1004-1212RC	5004-1212RC	15.25		387	15.25		387	6.42		163
N/A	5004-1212LCRC	15.25		387	15.25		387	6.42		163
1004-1515RC	N/A	19.74		501	19.74		501	9.89		251

1006 & 5006 RC Series - Concrete to Cast Iron or Plastic

1000 RC SERIES	5000 RC SERIES	A	in	mm	B	in	mm	C	in	mm
1006-44RC*	5006-44RC	5.64		143	4.51		115	3.97		101
1006-64RC*	N/A	7.58		193	4.38		111	5.94		151
1006-66RC*	5006-66RC	7.63		194	6.63		168	5.94		151
1006-86RC*	N/A	10.38		264	6.38		162	5.90		150
1006-88RC*	5006-88RC	10.49		266	8.63		219	5.90		150
1006-1010RC*	5006-1010RC	12.40		315	10.75		273	5.90		150
1006-1212RC*	5006-1212RC	15.25		387	12.60		320	6.42		163
1006-1515RC*	N/A	19.74		501	15.40		391	9.89		251

1051 & 5051 RC Series - AC or Ductile Iron to Cast Iron or Plastic

1000 RC SERIES	5000 RC SERIES	A	in	mm	B	in	mm	C	in	mm
1051-44RC	5051-44RC	4.80		122	4.39		112	3.94		100
1051-45RC*	N/A	5.00		127	5.52		140	3.97		101
1051-46RC*	5051-46RC	4.75		121	6.60		168	5.74		146
1051-55RC*	N/A	5.90		150	5.50		140	5.92		150
1051-64RC*	5051-64RC	6.95		177	4.38		111	5.92		150
1051-65RC*	N/A	6.95		177	5.50		140	5.92		150
1051-66RC	5051-66RC	6.69		177	6.69		170	5.91		150
1051-8-10RC*	N/A	9.05		230	10.63		270	5.89		150
1051-88RC	5051-88RC	9.25		235	8.51		216	5.97		152
1051-10-8RC*	N/A	11.02		280	8.38		213	5.97		152
N/A	5051-1010RC	11.02		280	10.52		267	5.85		148
1051-1212RC*	5051-1212RC	13.37		340	12.60		320	5.97		152
N/A	5051-1615RC	18.14		461	15.40		391	9.89		251
1051-1818RC	N/A	19.74		501	19.74		501	9.89		251

1055 & 5055 RC Series - AC or Ductile Iron to AC or Ductile Iron

1000 RC SERIES	5000 RC SERIES	A	in	mm	B	in	mm	C	in	mm
1055-44RC	5055-44RC	4.75		121	4.75		121	3.96		101
1055-66RC	5055-66RC	6.65		169	6.65		169	5.92		150
1055-88RC	5055-88RC	9.05		230	9.05		230	5.98		152
1055-1212RC	5055-1212RC	13.37		340	13.37		340	5.97		152

1056 RC Series - Cast Iron, Plastic, Copper, Steel or Lead

1000 RC SERIES	5000 RC SERIES	A	in	mm	B	in	mm	C	in	mm
1056-150RC	N/A	1.94		49	1.94		49	3.43		87
1056-22RC	N/A	2.41		61	2.41		61	3.45		88
1056-32RC*	N/A	3.52		89	2.38		60	3.96		101
1056-33RC	N/A	3.46		88	3.46		88	3.98		101
1056-43RC*	5056-43RC	4.58		116	3.38		86	4.02		102
1056-44RC	5056-44RC	4.58		116	4.58		116	4.02		102
1056-54RC*	5056-54RC	5.52		140	4.38		111	3.97		101
1056-55RC	5056-55RC	5.52		140	5.52		140	3.97		101
1056-64RC*	5056-64RC	6.60		168	4.50		114	5.74		146
1056-65RC*	N/A	6.60		168	5.62		143	5.74		146
1056-66RC	5056-66RC	6.60		168	6.60		168	5.74		146
1056-86RC*	N/A	8.64		219	6.63		162	6.04		153
1056-88RC	5056-88RC	8.64		219	8.64		219	6.04		153
1056-1010RC	5056-1010RC	10.63		270	10.63		270	5.89		150
1056-1212RC	5056-1212RC	12.52		318	12.52		318	6.32		161
1056-1515RC	5056-1515RC	15.92		404	15.92		404	9.89		251
1056-1818RC	5056-1818RC	19.10		485	19.10		485	9.89		251
N/A	5056-2424RC	25.10		638	25.10		638	9.89		251