

Flexible Tap Saddles Installation

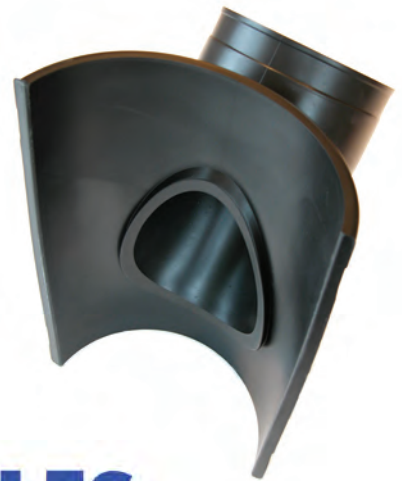
The faster and less costly way to make sewer main connections.



1. Excavate the trench exposing the outside diameter of the sewer main
2. Core a hole in the sewer main of appropriate diameter matching the contour of the Tap Saddle locating ring
 - a. Use a 5" Coring Bit or Hole Saw for TST-4 and TSW-4
 - b. Use a 7" Coring Bit or Hole Saw for TST-6 and TSW-6
3. Clean the pipe surface and remove any sharp edges
4. Wrap the clamps around the pipe, engage, and slide one to each side of the cored hole

**Refer to and follow the installation instructions for TSPK-46 when using the Fernco Tap Saddle Pressure Kit*

5. Position the Tap Saddle gasket over the pipe with the locating ring inside the cored hole
6. Holding the Tap Saddle firmly against the pipe and slide clamps in place and snug the clamps by pulling on the tail
7. Tighten clamps to 60"lbs. torque
8. Connect lateral pipe of appropriate size, tighten to 60"lbs. torque



Ti SALES

36 Hudson Rd
Sudbury MA 01776



800-225-4616
www.tisales.com

 **Fernco**[®]
Inc.

United States
PH: 810-503-9000
FX: 810-503-1015

www.fernco.com

Canada
PH: 519-332-6711
FX: 519-332-8610