



# The Meter Display™

**Model TMD - PATENT PENDING**

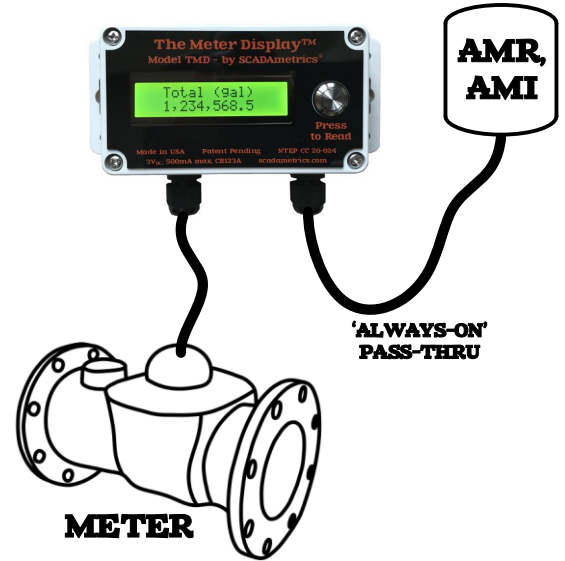


**MADE IN USA**



**AWWA C707-05 COMPLIANT**

**2 YEAR WARRANTY**



## The Industry's Most Revolutionary Remote Display for Water Meters – Ever!

Not just 'a' meter display – **The Meter Display!**

SCADAMetrics is pleased to introduce the new remote display for water meters that offers every feature one could ever want! – including the ability to work in conjunction with a co-connected AMI/AMR endpoint!

In the past, Meter Owners have been precluded from installing a remote wall display whenever the water meter signal cable was dedicated to an AMI/AMR endpoint. However, because **The Meter Display** is equipped with an integral pass-thru port, it can co-exist with an AMI/AMR system. And the pass-thru port is always functional, even if the battery is depleted or removed!

**The Meter Display** is compatible with every late-model, encoder-type water meter in North America – including those from **Sensus, Neptune, Metron-Farnier, Mueller, Kamstrup, Badger, Master Meter, RG3, Zenner, Elster-AMCO, McCrometer**, and many others!

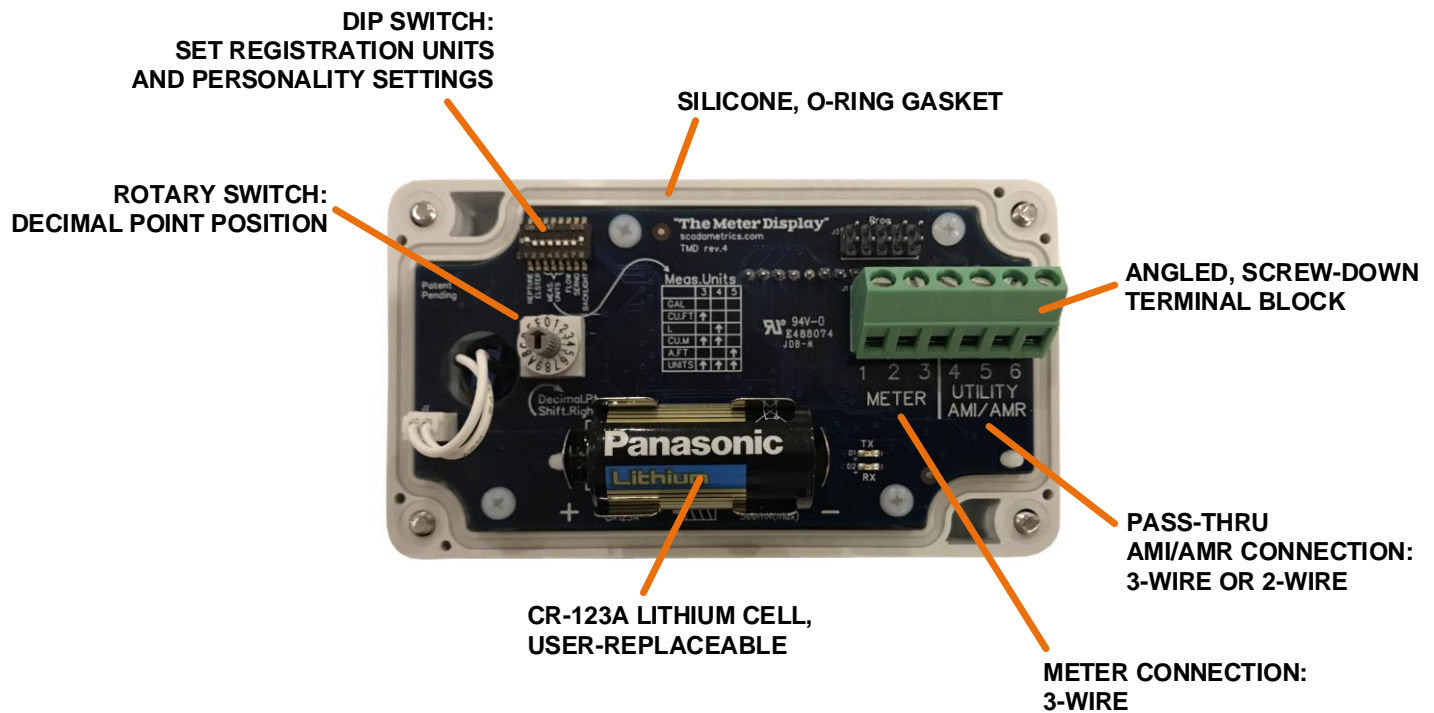
Permitting – If the meter is owned by the water utility, we recommend that you first contact its engineering department for permission!

## Key Features -

- Simple and Easy-to-Use: Just Press the Button!
- For Outdoor or Indoor Use
- Large, 2x16 Character Backlit Display
- Built-In Pass-Thru Port for Co-Connection to an AMI/AMR System (Works Even After Battery Depletion!)
- Low Power Consumption / 10+ Year Battery Life\*
- User-Replaceable, Non-Proprietary Lithium Cell
- Displays Registration Units (Gallons, Cubic Feet, Cubic Meters, Liters, Acre Feet, Generic Units)
- Displays Correct Decimal Point Placement
- Reading Features a Comma Separator After Every 3<sup>rd</sup> Digit
- Compatible with All Late-Model Encoder-Type Water Meters in the USA and Canada (Sensus 4-9 Digit, Neptune 6,8-Digit, Elster K-Frame Protocols).
- Displays Approximate Rate-of-Flow. Requires Meter with 7/8/9-Digit Registration. 8/9-Digit Preferred.
- Displays Water Meter Serial Number
- Built to NEMA-4X, IP65 Specifications, Not Submersible
- Rugged Polycarbonate Enclosure with Wall-Mount Flanges
- Easy Wiring, with Angled, Screw-Down Terminal Block
- Battery Voltage Display
- No Programming Required
- NTEP-Certified

Are you interested in how SCADAMetrics meter display technology can help you more closely monitor your water meter readings? Give us a call! We'll be glad to discuss the details!





## Engineering Specifications -

Dimensions:	5.75" x 3.50" x 1.75"
Weight:	8.5 Ounces
Physical Display:	2x16 Characters, Character Dimension: 0.114 x 0.203 inch
Displayed Metering Data:	Meter Totalization, Meter Serial Number
Displayed Flow Rate Data:	Approximate Flow Rate. Requires 7/8/9-Digit, Fine-Resolution Water Meter Register. 8/9-Digit Preferred.
Displayed Battery Status:	Volts (New Battery ~ 3.2V, Depleted Battery ~ 2.2V)
Pass-Thru Port for AMR/AMI:	Yes, Supports both 3-Wire and 2-Wire AMR Devices
Meter Cable Connection:	3-Position, 35deg Screw-Down Terminal Block, 12-26 AWG
AMR/AMI Cable Connection:	3-Position, 35deg Screw-Down Terminal Block, 12-26 AWG
Programming Method:	Integrated DIP Switch and Rotary Switch
Supported Units:	Gallon, Cubic Feet, Cubic Meters, Liters, Acre-Feet, Generic "Units"
Supported Multipliers:	x1 , x10 , x100 , x1,000 , x10,000 , x100,000 , x1,000,000 , x10,000,1000
Supported Divisors:	x0.1 , x0.01 , x0.001 , x0.0001 , x0.00001 , x0.000001 , x0.0000001
Sensus Protocol Support:	Yes, Both Fixed and Variable Digit Sensus Protocols (4-9 digits)
Neptune Protocol Support:	Yes, Both 8-Digit "E-Coder Plus", and 6-Digit "Pro-Read" Protocols
Elster Protocol Support:	Yes, Auto-Fills Units and Decimal Shift Based on Elster K-Frame Protocol Information
Temperature:	-20C to 70C (-4°F to 158°F)
Relative Humidity:	5% to 95%, Non-Condensing
Enclosure Rating:	Built to NEMA-4X and IP65 Specifications, Not Rated for Submersion
Manufacturing Location:	USA
Environmental:	ROHS-Compliant, Lead-Free
Meter Interface:	AWWA C707-05
NTEP-Certification:	Certificate No. CC-20-024
NTEP Security:	Two (2) Tamper-Evident Seals, Provided & Affixed by Registered Service Agency
Display Integrity Check:	Yes - Pixel Test Pattern Displayed
Internal Desiccant Pack:	Yes - Silica Gel, 5gm
Sealing Plug:	Yes - 1/4" NPT Plug. Replaces 2 <sup>nd</sup> Cable Gland If AMI/AMR Pass-Thru Port Not Used.
Warranty:	2 Years (see <a href="http://www.scadametrix.com">www.scadametrix.com</a> for details)
Battery:	Energizer 123 (EL123AP, 1500mAh) or Panasonic 123 (CR123A, 1550mAh), User-Replaceable
*Estimated Battery Life:	Lesser of 10 Years or 12,000 Basic Meter Reads (Backlight OFF, Flow OFF, Meter ID OFF), Lesser of 10 Years or 10,000 Enhanced Meter Reads (Backlight ON, Flow OFF, Meter ID OFF).