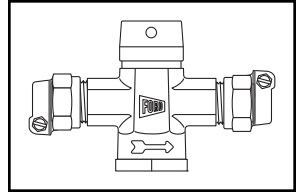


# SUBMITTAL INFORMATION

## Inverted Key Curb Stop- (Z44-xxx-NL style)



### PACK JOINT FOR COPPER OR PLASTIC TUBING (CTS) INLET AND OUTLET

Sturdy stops allow 90° motion and are enclosed and protected.

Beveled EPDM rubber gasket provides hydraulic seal

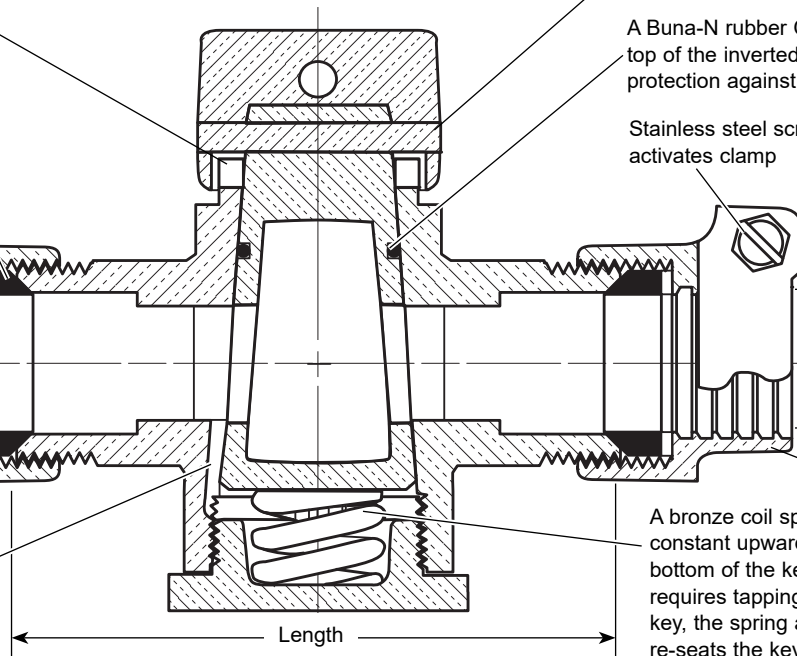
Anti-friction washer

Integral clamp contains machined grooves for axial restraint

Inlet Size

Pack Joint Nut

A water passage on the inlet side provides upward pressure on the key, helping to hold it in the proper position.



Bronze pin securely locks the tee head to the inverted key

A Buna-N rubber O-ring near the top of the inverted key offers extra protection against leaks.

Stainless steel screw activates clamp

Outlet Size

Pack Joint Nut

A bronze coil spring exerts a constant upward force on the bottom of the key. If the tee-head requires tapping to free a stuck key, the spring automatically re-seats the key in a watertight position.

Length

VALVE SIZE	INLET SIZE	OUTLET SIZE	LENGTH	APPROX. WT. LBS	PART NUMBER	✓ SUBMITTED ITEM(S)
1/2"	1/2"	1/2"	3-5/8"	1.7	Z44-111-NL	
3/4"	5/8"	5/8"	5-1/16"	2.9	Z44-322-NL	
3/4"	3/4"	3/4"	5-1/16"	2.8	Z44-333-NL	
1"	1"	1"	6-1/16"	4.1	Z44-444-NL	

Note: Ford recommends using insert stiffeners with plastic pipe or tubing.

### FEATURES

- All brass that comes in contact with potable water conforms to AWWA Standard C800 (ASTM B584, UNS C89833)
- The product has the letters "NL" cast into the main body for lead-free identification
- Certified to NSF/ANSI Standard 61 and NSF/ANSI Standard 372 where applicable
- Brass components that do not come in contact with potable water conform to AWWA Standard C800 (ASTM B62 and ASTM B584, UNS C83600, 85-5-5-5)
- Hole for attaching curb box rod is provided in tee-head
- Meets 100 PSI pressure requirement of AWWA Standard C800

**Optional full 360° tee-head rotation.** Add "R" to end of part number. Example: Z44-111R-NL

The Ford Meter Box Company considers the information in this submittal form to be correct at the time of publication. Item and option availability, including specifications, are subject to change without notice. Please verify that your product information is current.



**The Ford Meter Box Company, Inc.**  
 P.O. Box 443, Wabash, Indiana U.S.A. 46992-0443  
 Phone: 260-563-3171 / Fax: 800-826-3487  
 Overseas Fax: 260-563-0167  
 www.fordmeterbox.com

10/20/16

Submitted By:



36 Hudson Rd  
 Sudbury MA 01776



800-225-4616  
 www.tisales.com