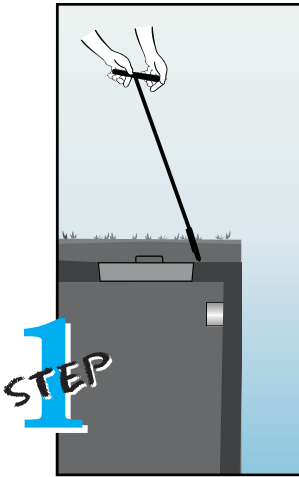


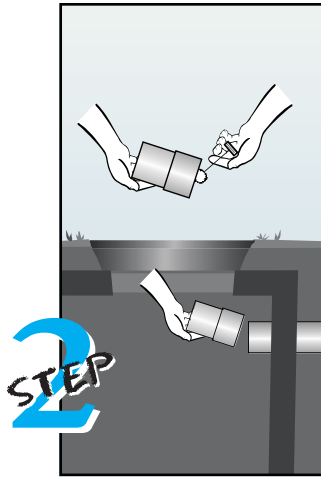
INSTALLATION INSTRUCTIONS

ZABEL FILTERS: A100/300/600 - 8" & 12"

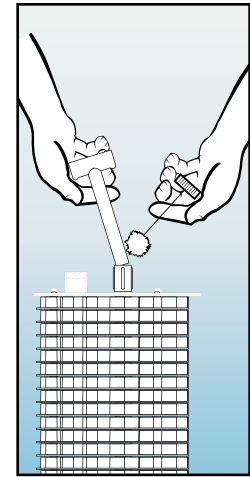
New System Installation:



Step 1:
Locate the outlet of the septic tank and remove the tank cover.



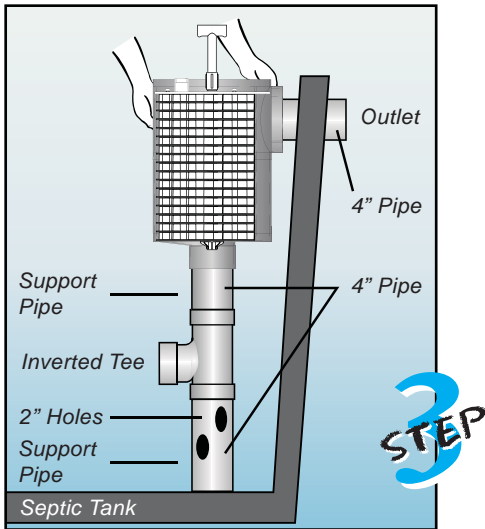
Step 2:
Before installation place the filter case on the outside pipe, to make sure it will be centered under the access opening. If not, solvent weld (glue) additional pipe to the outlet pipe, or insert a Polylok Extend & Lok.



HANDLE INSTALLATION:

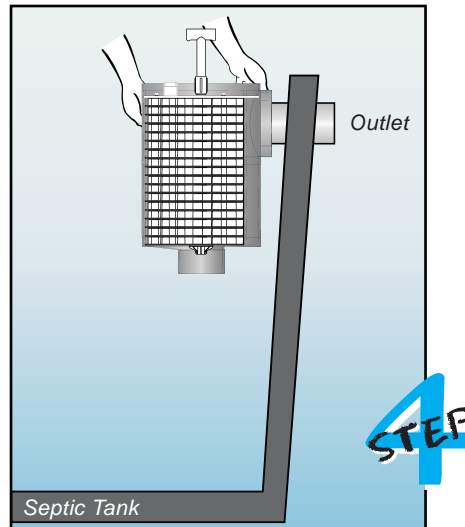
1. Glue handle on top of 1" SCH 40 pipe.
2. Glue the bottom of the 1" pipe and insert into the slip on the filter top.

Note: Always clean and prime all pipe before solvent welding. The handle assembly must be glued to the lid of the filter before installation.



Step 3:
For installations requiring the Supplementary Support Method only. If extra support for the filter is not needed go to step 4.

Solvent weld (glue) the reducer to the bottom of the filter case. Then weld a support pipe, an inverted tee, and another support pipe in the bottom of the reducer. Place the filter, reducer, and support pipe on the outlet pipe. Adjust the support pipe so it rests on the bottom of the tank. Remove and cut four 2" holes from top to bottom in the support pipe. A contractor or pumper will determine the pipe measurements.



Step 4:
Solvent weld the filter case on the outlet pipe. Insert the filter cartridge in the case, making sure the filter cartridge is properly aligned and completely inserted in the case.

Note: Make sure filter is installed level within the tank.

EXISTING SYSTEM INSTALLATION:
Same as a new system installation, except the tank must be pumped before the installation of the filter.

Notes:

1. If you have purchased an A100/300/600-12x28 or larger model filter Zabel recommends using the Supplementary Support Method seen in Step 3.

2. If you have purchased a Zabel Smartfilter alarm, additional installation instructions can be found in the Smartfilter Alarm System box.

3. The outlet access opening of the tank, under which the filter is centered, should be at least 15" in diameter to allow for easy removal of the filter cartridge.

4. A riser to grade over the outlet access opening is recommended and may be required in certain states.

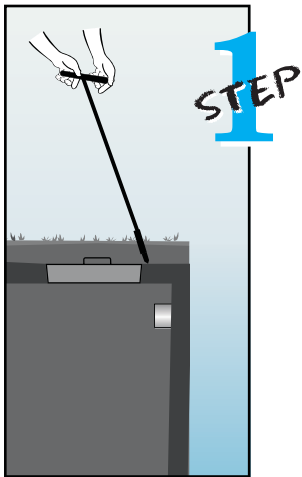
5. If the filter can not be installed in the existing tank, it can be installed using a Polylok/Zabel basin system. In this case, the new system instructions will be used.

6. Minimum of 3" drop required in tank for proper SmartFilter alarm operation.

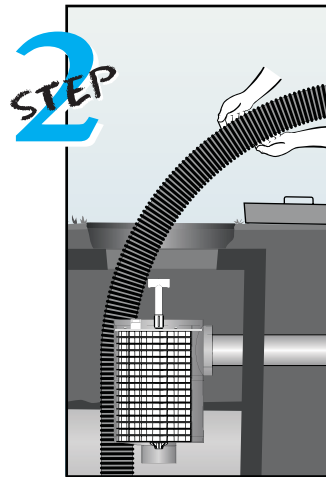
MAINTENANCE INSTRUCTIONS

ZABEL FILTERS: A100/300/600 - 8" & 12"

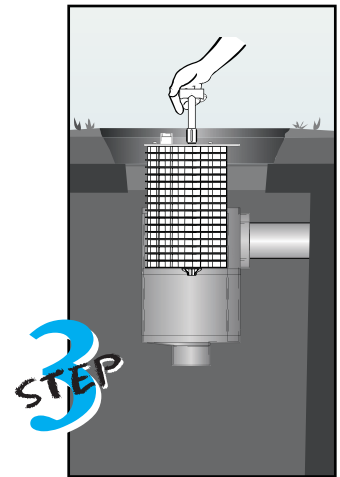
The interval for servicing septic tanks is set by state and local code. Throughout the United States, there is a wide difference of opinion on what this interval should be, but most regulatory agencies suggest two to five years. The Zabel filter, which does not increase the frequency of servicing for the tank, should be cleaned when the septic tank is normally inspected and pumped. However, our filter is virtually self-cleaning. The continued action of the anaerobic organisms on the Zabel filter causes lodged particles to disintegrate and fall to the bottom of the tank. If your filter contains a SmartFilter® alarm, you will be notified by an alarm when the filter needs servicing.



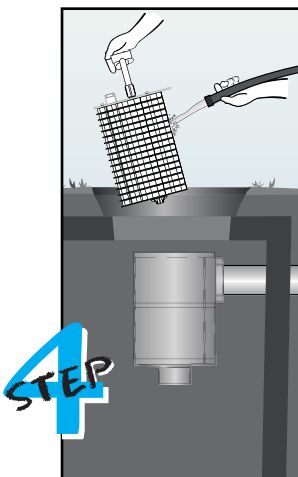
Step 1: Locate the outlet of the septic tank and remove the tank cover.



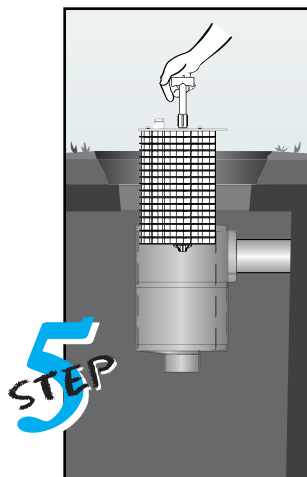
Step 2: Remove the tank cover and pump the tank if necessary to prevent any solids from escaping to the the drain field when the filter is removed.



Step 2: Firmly pull the filter handle and slide the cartridge out of the case.



Step 4: While holding the cartridge over the access opening, rinse off the cartridge with fresh water, being careful to rinse all septage material back into the tank.



Step 5: Insert the filter cartridge back in the case, making sure the filter cartridge is properly aligned and completely inserted in the case. Replace the septic tank cover.

Note: Servicing any Zabel filter should only be done by a certified septic tank pumper or installer.

Note: If you have a filtered Versa-Case model filter, be sure and spray clean the outlet opening before replacing the filter.

